



**Crawthow Grove, SE22**

2 bedroom flat to let

**£576 Per Week**

Unfurnished

## Property Details

This little gem is tucked away on a quiet residential road just off Lordship Lane. Boasting amazing views, this beautifully presented two bed apartment feels like a home the moment you walk through the door. The flat comes with an enormous kitchen/reception to the rear that opens lead out onto the large private roof through full width concertina doors. The kitchen is fitted with all the mod cons and stylish navy units as well as hardwood floors and a bright bay window. The property also comprises two double bedrooms with one of the rooms benefits from its own luxurious en-suite. Having direct access to private outside space is more important than ever and this property has a terrace with stunning views out over neighbouring rooftops. The flat is located in the middle of Lordship lane providing access to the countless restaurants, pubs, boutiques and other amenities associated with the popular road which by many is seen as the hub of East Dulwich. There is also plenty of green space nearby, with Dulwich Park and Peckham Rye Park being both within a short walking distance.

## Features

- Two double bedrooms
- Two bathrooms
- Open plan reception
- Modern kitchen
- Private roof terrace
- Close to high street amenities
- Close to transport links
- Furnished/Unfurnished

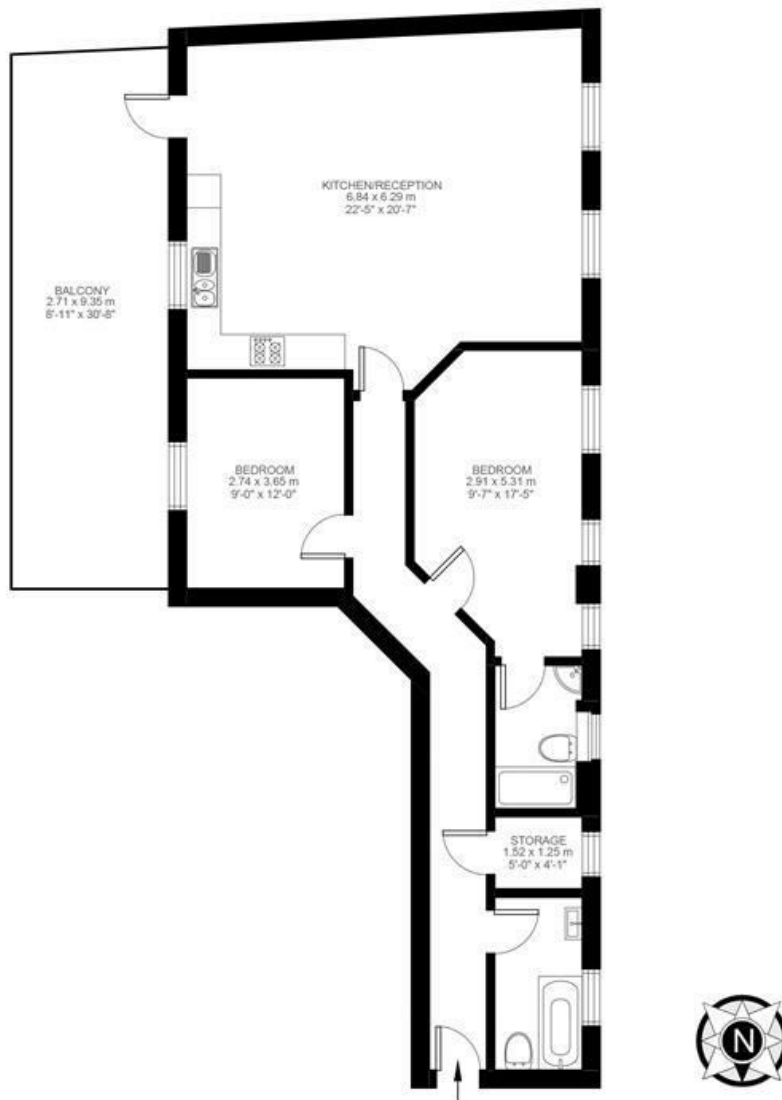
Council tax band C      EPC rating B (84)



**Crawthew Grove, Peckham, SE22**

**2 Bedroom Flat**

Approximate internal area: **966 sqft 90 sqm**



Second Floor



While we do try our very best, floor plans are produced as a guide only and we take no responsibility for the precise accuracy with which any property is represented.

Crawthow Grove, SE22

